

ST. PETERSBURG HARBOR PINELLAS COUNTY, FLORIDA PROJECT CONDITION SURVEY FY21 12 TO 24-FOOT PROJECT

- SURVEY NOTES**
- REFER TO SURVEY NO. 21-105.
 - SOUNDINGS ARE IN FEET AND TENTHS AND REFER TO NOAA'S REPORTED MEAN LOWER LOW WATER (MLLW) OF THE 1983-2001 TIDAL EPOCH.
 - TIDAL REDUCTIONS WERE OBTAINED UTILIZING A REAL-TIME KINEMATIC (RTK) GPS AND REFERENCED TO MLLW UTILIZING A HYPACK KINEMATIC TIDE DATUM (KTD) MODEL. KTD FILE NAME IS: "SPC-FL-WEST-2010-12-07.KTD".
 - ALL ELEVATIONS ARE BELOW THE CHART DATUM UNLESS PRECEDED BY A (+) SIGN.
 - PLANE COORDINATES ARE BASED ON THE TRANSVERSE MERCATOR PROJECTION FOR THE WEST ZONE OF FLORIDA AND REFERENCED TO NORTH AMERICAN DATUM OF 1983.
 - ALL STATIONING REFERS TO THE CENTERLINE OF THE CHANNEL.
 - THIS SURVEY WAS PERFORMED USING REAL-TIME KINEMATIC (RTK) GPS POSITIONING WITH THE FOLLOWING REFERENCE BASE LOCATIONS:
REFERENCE BASE LOCATED AT "TAMPA HYDRO FIELD OFFICE ARP" (OPUS PID: BBGK81)
TIDE MEASURE DOWN POINT LOCATED AT "EDD-60" (PID: AGS298)
 - DEPTHS DEPICTED BY THIS SURVEY ARE REFERENCED TO MLLW, TIDAL EPOCH 1983-2001, AS REPORTED BY THE NATIONAL OCEANIC AND ATMOSPHERIC ADMINISTRATION (NOAA). NOAA'S DATUM MODEL WAS USED AND CALIBRATED TO THE PUBLISHED MLLW HEIGHTS OF THE BENCHMARKS ASSOCIATED WITH THE TIDE GAGE SITE SPECIFIED BELOW:
NOAA TIDAL STATION 872-6520, ST. PETERSBURG, TAMPA BAY FOR ALL CUTS
 - VERTICAL MEASUREMENTS WERE MADE USING A ROSS MODEL 835C SMART-SOUNDER WITH A DUAL-FREQUENCY 28/200 KHZ SINGLE-BEAM TRANSDUCER, A RESON T20P AND A R2 SONIC 2024 OPERATING AT 240 KHZ. ALL SOUNDINGS SHOWN ARE IN HIGH FREQUENCY.
- | VESSEL | DATE OF SURVEY | CUT |
|---------------|-----------------|----------------------------------|
| SB-52 | 06 OCT 2021 | TURNING BASIN, BAYBORO HBR BASIN |
| SB-52 | 07, 12 OCT 2021 | CUT-A STA 0+00 - 182+00 |
| SB-52 | 25 OCT 2021 | ENTRANCE CHANNEL |
| SV FLORIDA II | 26 OCT 2021 | OUTER CUT |
| SV FLORIDA II | 27 OCT 2021 | CUT-A STA 190+00 - 300+00 |
- AIDS TO NAVIGATION WERE LOCATED DURING THIS SURVEY.
 - THE INFORMATION DEPICTED ON THIS MAP REPRESENTS THE RESULTS OF SURVEYS MADE ON THE DATES INDICATED ABOVE AND CAN ONLY BE CONSIDERED AS INDICATING THE GENERAL CONDITIONS AT THAT TIME. THIS CHART IS SOLELY FOR THE DISTRIBUTION OF AVAILABLE DEPTHS AT THE TIME OF THE SURVEY.
 - SURVEY ACCURACY PERFORMANCE STANDARDS, QUALITY CONTROL, AND QUALITY ASSURANCE REQUIREMENTS WERE FOLLOWED DURING THIS SURVEY IN ACCORDANCE WITH USACE EM 1110-2-1003, HYDROGRAPHIC SURVEYING, 30 NOV 2013.

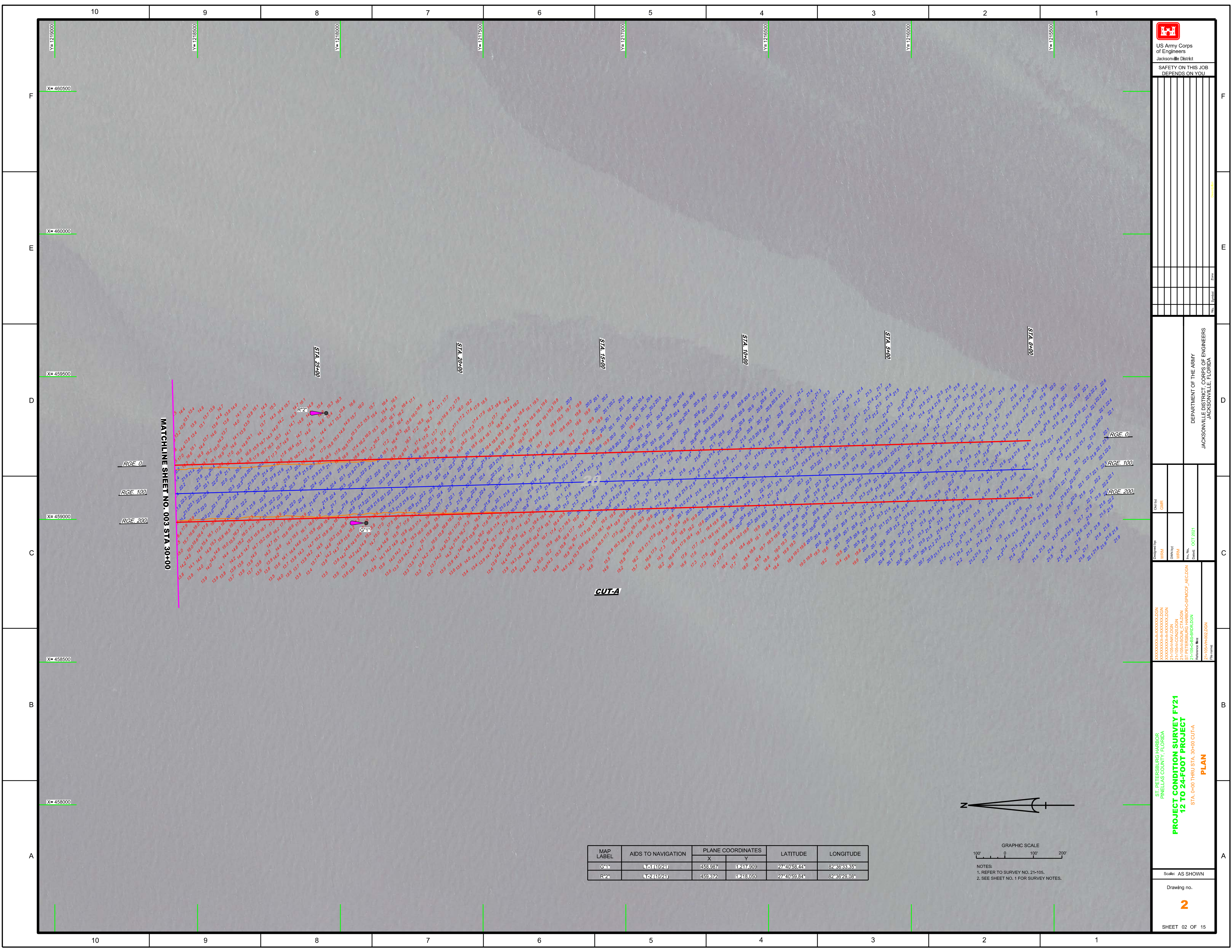
LEGEND	
	MONUMENT
	LIGHTED BEACON
	GREEN DAY BEACON
	RED DAY BEACON
	RED LIGHTED BUOY
	GREEN LIGHTED BUOY
	CAN BUOY
	NUN BUOY
	TIDE STAFF
	PROJECT DEPTH


US Army Corps of Engineers
Jacksonville District
SAFETY ON THIS JOB
DEPENDS ON YOU

DEPARTMENT OF THE ARMY
JACKSONVILLE DISTRICT, CORPS OF ENGINEERS
JACKSONVILLE, FLORIDA

ST. PETERSBURG HARBOR
PINELLAS COUNTY, FLORIDA
PROJECT CONDITION SURVEY FY21
12 TO 24-FOOT PROJECT
INDEX, LOCATION AND VICINITY
MAP

Scale: AS SHOWN
Drawing no. 1
SHEET 01 OF 15





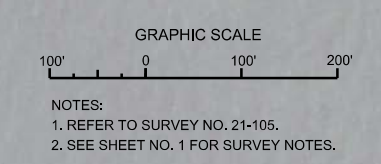
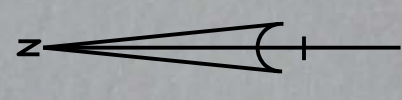
 US Army Corps of Engineers
 Jacksonville District
 SAFETY ON THIS JOB
 DEPENDS ON YOU

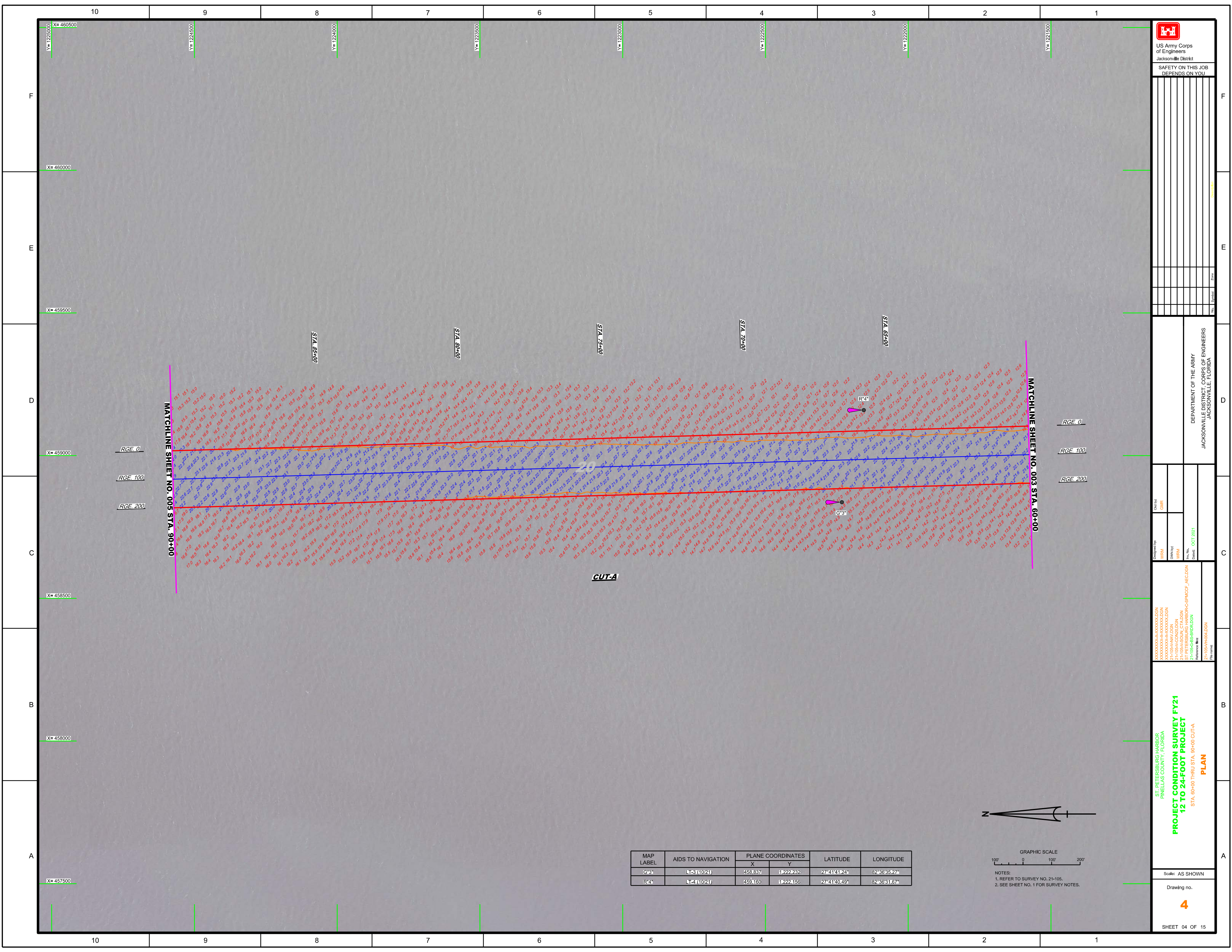
DEPARTMENT OF THE ARMY
 JACKSONVILLE DISTRICT, CORPS OF ENGINEERS
 JACKSONVILLE, FLORIDA


Designed by: **WRM**
 Checked by: **WRM**
 Date: **OCT 2021**

ST. PETERSBURG HARBOR
 PINELAS COUNTY, FLORIDA
PROJECT CONDITION SURVEY FY21
12 TO 24-FOOT PROJECT
 STA. 0+00 THRU STA. 30+00 CUT-A
PLAN

MAP LABEL	AIDS TO NAVIGATION	PLANE COORDINATES		LATITUDE	LONGITUDE
		X	Y		
G1	W1 (10/21)	458,987	1217,609	27°40'58.24"	82°36'33.35"
R2	W2 (10/21)	459,372	1218,050	27°40'59.84"	82°36'29.08"







 US Army Corps of Engineers
 Jacksonville District
 SAFETY ON THIS JOB
 DEPENDS ON YOU

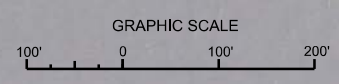
DEPARTMENT OF THE ARMY
 JACKSONVILLE DISTRICT, CORPS OF ENGINEERS
 JACKSONVILLE, FLORIDA

Call by: GHR
 Designed by: WRM
 Drawn by: WRM
 Date: OCT 2021

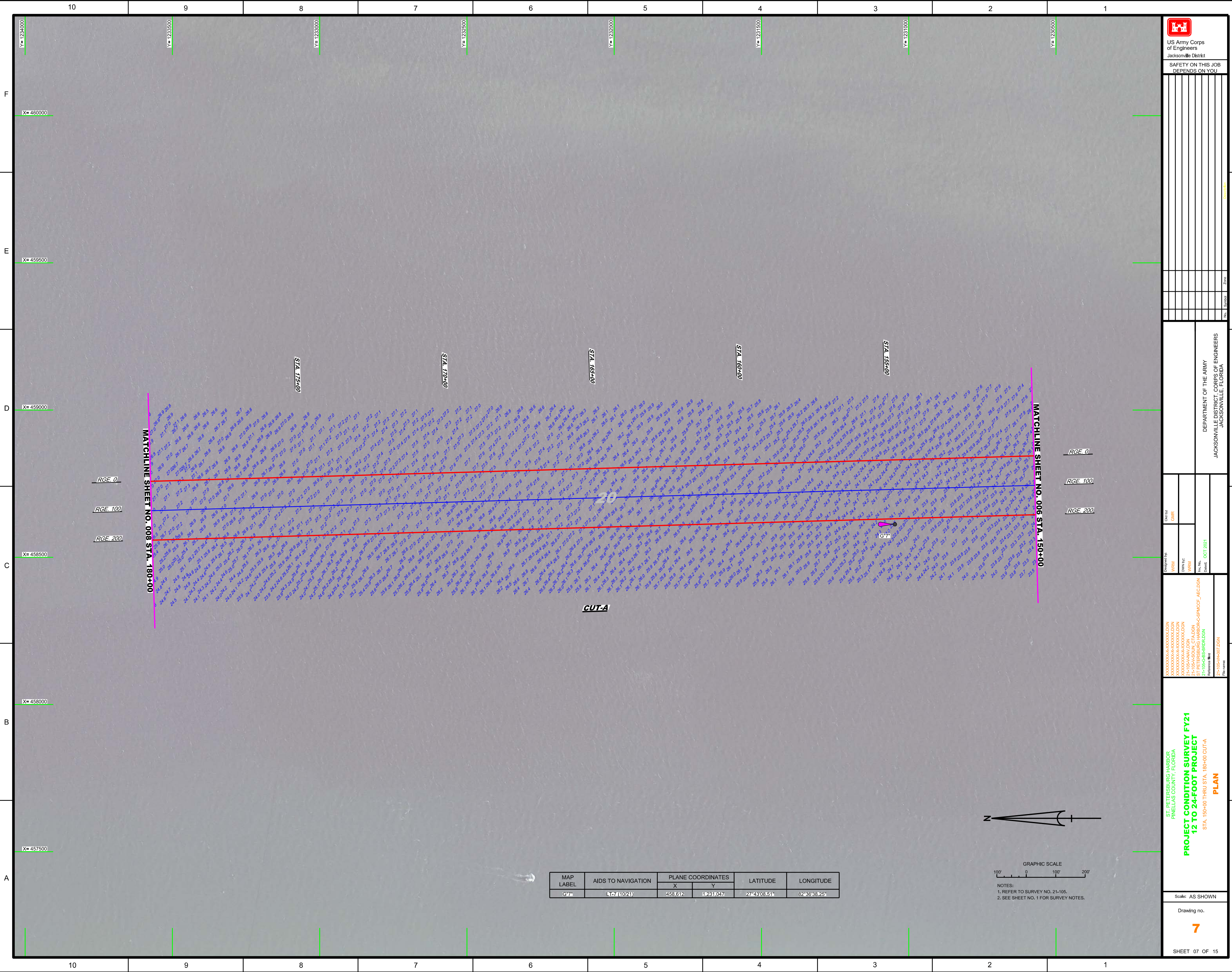
ST. PETERSBURG HARBOR
 PINELAS COUNTY, FLORIDA
PROJECT CONDITION SURVEY FY21
12 TO 24-FOOT PROJECT
 STA. 60+00 THRU STA. 90+00 CUT-A
PLAN


Scale: AS SHOWN
 Drawing no. **4**
 SHEET 04 OF 15

MAP LABEL	AIDS TO NAVIGATION	PLANE COORDINATES		LATITUDE	LONGITUDE
		X	Y		
G3*	153 (10/21)	458,837	1,222,232	27°41'41.24"	82°36'35.27"
R4*	111 (10/21)	458,160	1,222,156	27°41'40.49"	82°36'31.67"



NOTES:
 1. REFER TO SURVEY NO. 21-105.
 2. SEE SHEET NO. 1 FOR SURVEY NOTES.




 US Army Corps of Engineers
 Jacksonville District
 SAFETY ON THIS JOB
 DEPENDS ON YOU

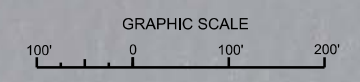
DEPARTMENT OF THE ARMY
 JACKSONVILLE DISTRICT, CORPS OF ENGINEERS
 JACKSONVILLE, FLORIDA

Call by: GHR
 Designed by: WRM
 Drawn by: WRM
 File No.: 27-105-6-BS-BRDALDN
 Date: OCT 2021

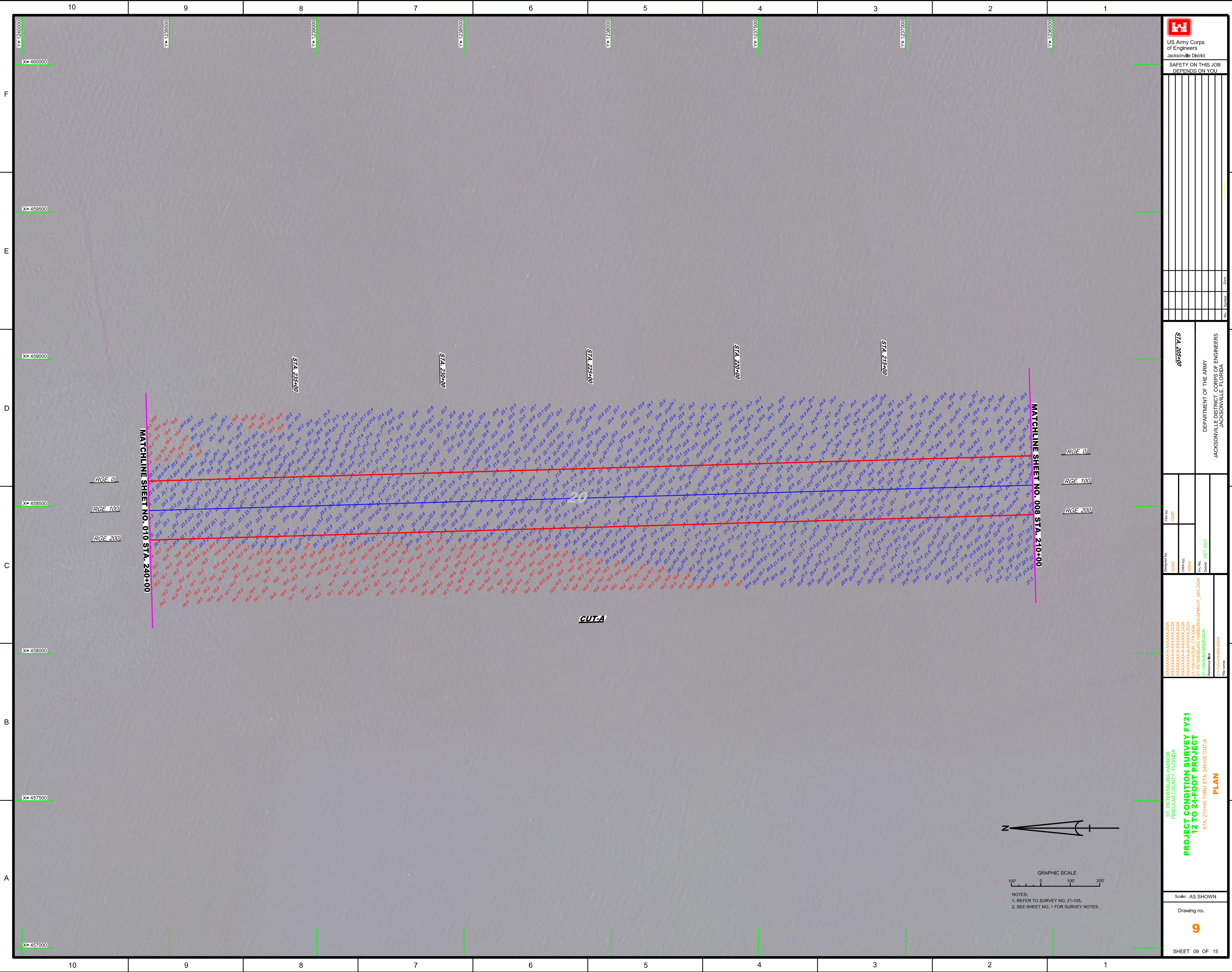
ST. PETERSBURG HARBOR
 PINELAS COUNTY, FLORIDA
PROJECT CONDITION SURVEY FY21
12 TO 24-FOOT PROJECT
 STA. 150+00 THRU STA. 180+00 CUT-A
PLAN

Scale: AS SHOWN
 Drawing no.
7

MAP LABEL	AIDS TO NAVIGATION	PLANE COORDINATES		LATITUDE	LONGITUDE
		X	Y		
G7*	LT-7(10/21)	458612	1231047	27°43'08.51"	82°36'38.25"



NOTES:
 1. REFER TO SURVEY NO. 21-105.
 2. SEE SHEET NO. 1 FOR SURVEY NOTES.



US Army Corps of Engineers

 Jacksonville District

 SAFETY ON THIS JOB

 DEPENDS ON YOU

STA 205+00

 DEPARTMENT OF THE ARMY

 JACKSONVILLE DISTRICT, CORPS OF ENGINEERS

 JACKSONVILLE, FLORIDA

Drawn by: WRM

 Check by: GHR

 Date: OCT 2021

ST-PETERSBURG-HARBOR

 PINELAS COUNTY, FLORIDA

 PROJECT CONDITION SURVEY FY21

 12 TO 24-FOOT PROJECT

 STA. 210+00 THRU STA. 240+00 CUT-A

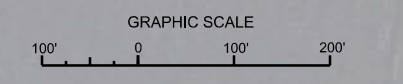
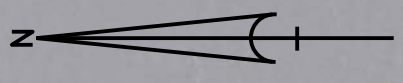
 PLAN

Scale: AS SHOWN

 Drawing no.

9

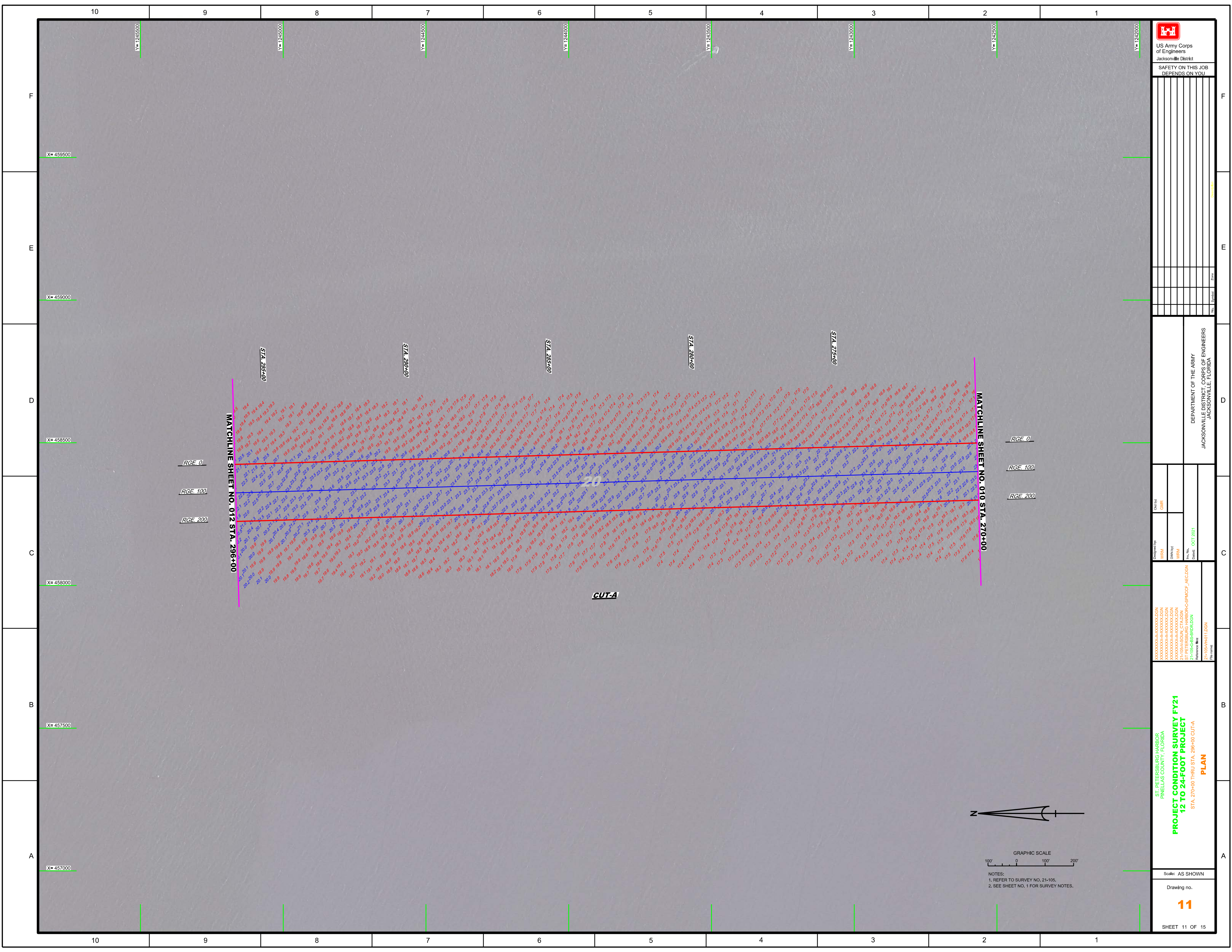
 SHEET 09 OF 15




NOTES:

 1. REFER TO SURVEY NO. 21-105,

 2. SEE SHEET NO. 1 FOR SURVEY NOTES.





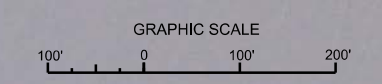
 US Army Corps of Engineers
 Jacksonville District
 SAFETY ON THIS JOB
 DEPENDS ON YOU

DEPARTMENT OF THE ARMY
 JACKSONVILLE DISTRICT, CORPS OF ENGINEERS
 JACKSONVILLE, FLORIDA

Designed by: WRM
 Drawn by: WRM
 Checked by: WRM
 Date: OCT 2021
 File name: 21-105-VH01.DGN

ST. PETERSBURG HARBOR
 PINELAS COUNTY, FLORIDA
PROJECT CONDITION SURVEY FY21
12 TO 24-FOOT PROJECT
 STA. 270+00 THRU STA. 296+00 CUT-A
PLAN

Scale: AS SHOWN
 Drawing no.
11
 SHEET 11 OF 15



NOTES:
 1. REFER TO SURVEY NO. 21-105.
 2. SEE SHEET NO. 1 FOR SURVEY NOTES.

MATCHLINE SHEET NO. 012 STA. 296+00

MATCHLINE SHEET NO. 010 STA. 270+00

CUT-A

RGE 0
RGE 100
RGE 200

RGE 0
RGE 100
RGE 200

STA. 296+00

STA. 290+00

STA. 284+00

STA. 280+00

STA. 274+00

X= 459500

X= 459000

X= 458500

X= 458000

X= 457500

X= 457000

Y= 1245500

Y= 1245000

Y= 1244500

Y= 1244000

Y= 1243500

Y= 1243000

Y= 1242500

Y= 1242000

10

9

8

7

6

5

4

3

2

1

10

9

8

7

6

5

4

3

2

1

F

E

D

C

B

A

F

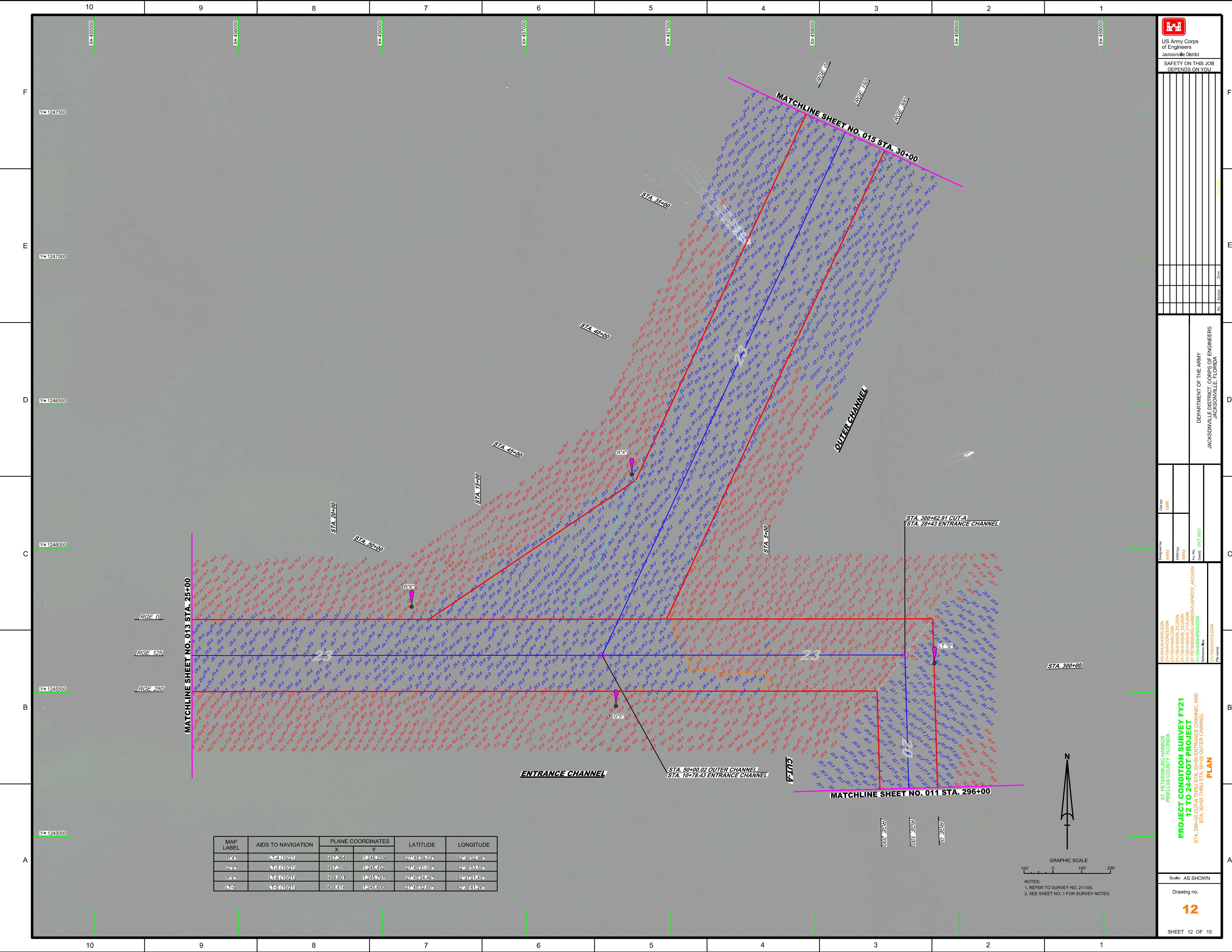
E

D

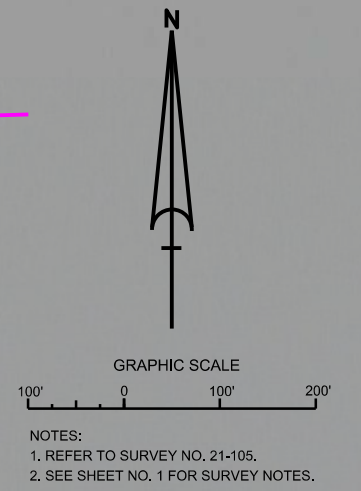
C

B

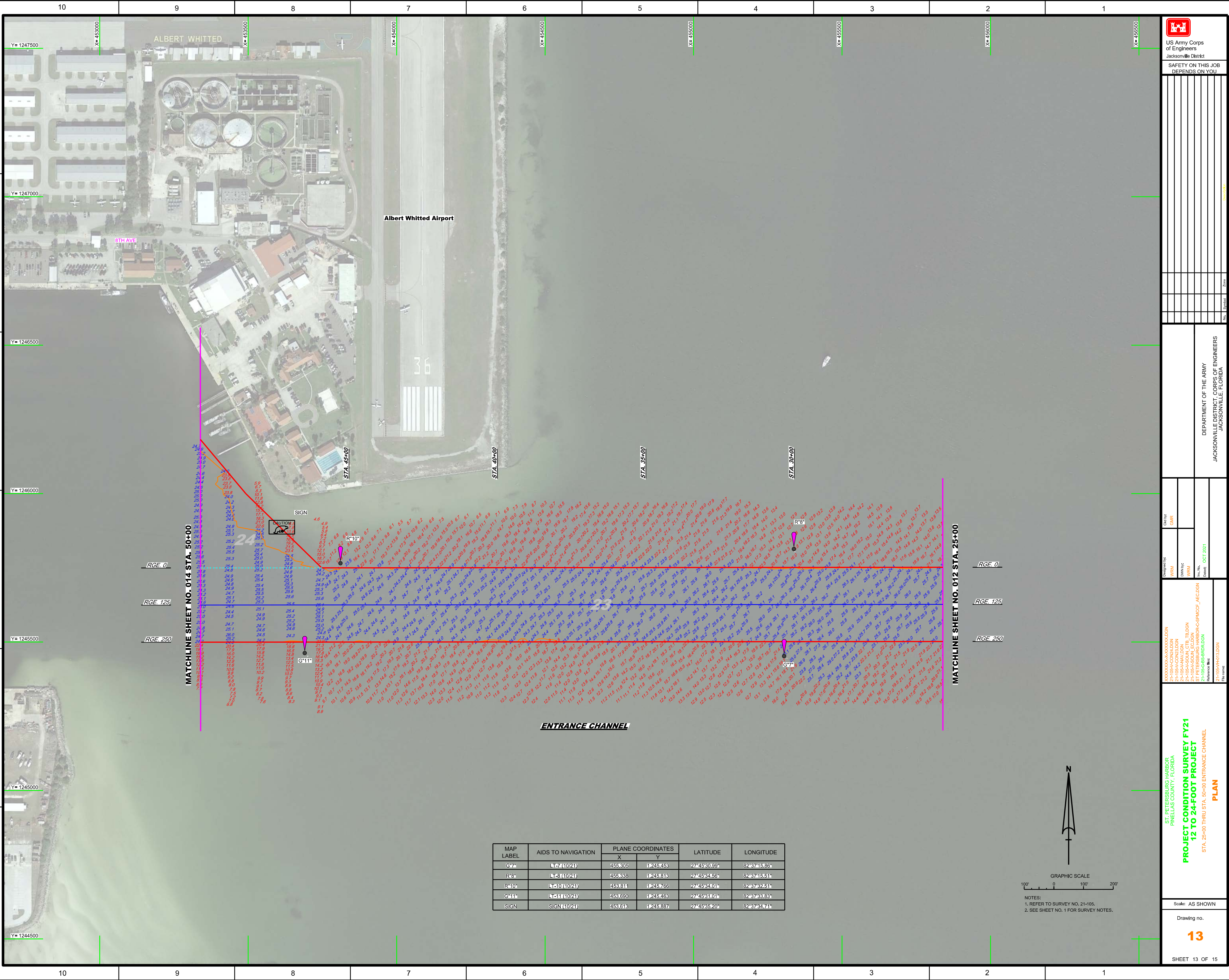
A



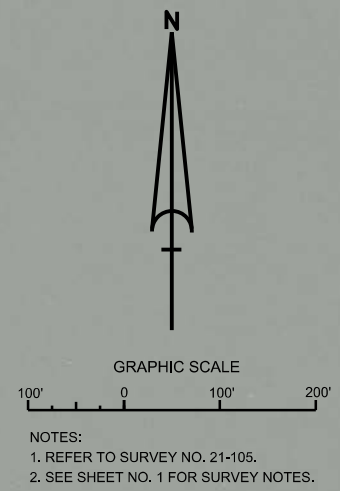
MAP LABEL	AIDS TO NAVIGATION	PLANE COORDINATES		LATITUDE	LONGITUDE
		X	Y		
R4s	LTES (10/24)	457,364	1245,255	27°45'39.03"	82°35'52.93"
G4s	LTES (10/24)	457,806	1245,452	27°45'31.08"	82°36'53.55"
R6s	LTES (10/24)	458,601	1245,637	27°45'34.15"	82°37'01.65"
LTFS	LTES (10/24)	458,414	1245,600	27°45'32.60"	82°36'41.26"




NOTES:
1. REFER TO SURVEY NO. 21-105.
2. SEE SHEET NO. 1 FOR SURVEY NOTES.



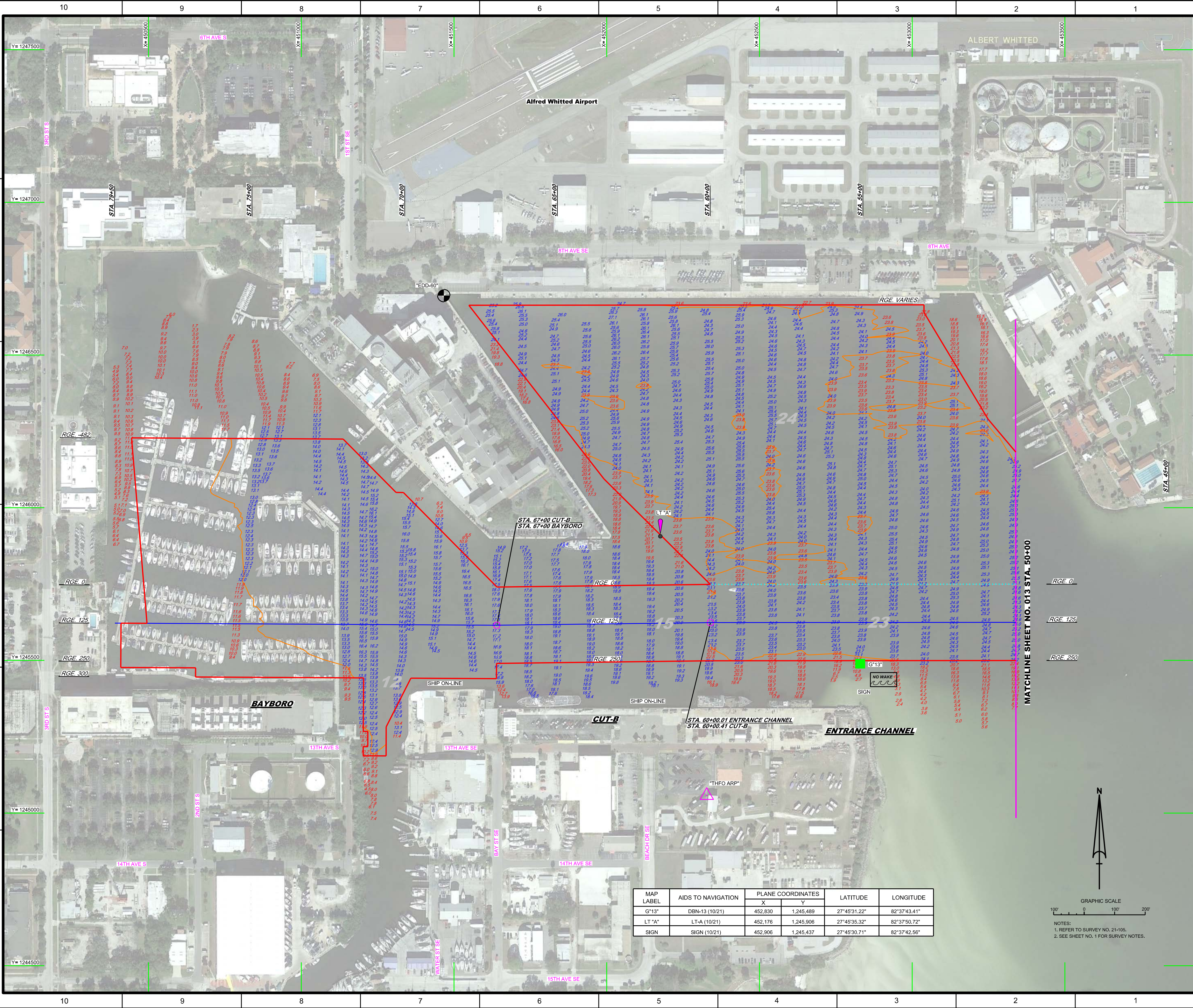
MAP LABEL	AIDS TO NAVIGATION	PLANE COORDINATES		LATITUDE	LONGITUDE
		X	Y		
G7#	☐51(10/21)	4558305	1245458	27°45'20.59"	82°37'45.86"
R6#	☐51(10/21)	4558338	1245458	27°45'21.55"	82°37'45.51"
R10#	☐51(10/21)	4558111	1245766	27°45'24.01"	82°37'32.51"
G11#	☐51(10/21)	4558690	1245458	27°45'21.01"	82°37'46.83"
SIGN	SIGN(10/21)	4558318	1245637	27°45'20.20"	82°37'44.71"





US Army Corps of Engineers
Jacksonville District
SAFETY ON THIS JOB
DEPENDS ON YOU

<p>Designed by: WRM Checked by: GHR Drawn by: WRM Reviewed by: WRM Date: OCT 2021</p>	<p>Call by: GHR</p>
<p>DEPARTMENT OF THE ARMY JACKSONVILLE DISTRICT, CORPS OF ENGINEERS JACKSONVILLE, FLORIDA</p>	
<p>ST. PETERSBURG HARBOR PINELAS COUNTY, FLORIDA PROJECT CONDITION SURVEY FY21 12 TO 24-FOOT PROJECT STA. 25+00 THRU STA. 50+00 ENTRANCE CHANNEL PLAN</p>	
<p>Scale: AS SHOWN</p>	
<p>Drawing no. 13</p>	
<p>SHEET 13 OF 15</p>	



US Army Corps
of Engineers
Jacksonville District

SAFETY ON THIS JOB
DEPENDS ON YOU

DEPARTMENT OF THE ARMY
JACKSONVILLE DISTRICT, CORPS OF ENGINEERS
JACKSONVILLE, FLORIDA

Client: GHR

Drawn by: WRM

Checked: WRM

Date: OCT 2021

Project: ST. PETERSBURG HARBOR, PINELAS COUNTY, FLORIDA

Task: PROJECT CONDITION SURVEY FY21

Sub-Task: 12 TO 24-FOOT PROJECT

Sheet: STA. 50+00 ENTRANCE CHANNEL THRU STA. 79+50 BAYBORO

Scale: AS SHOWN

Drawing no. 14

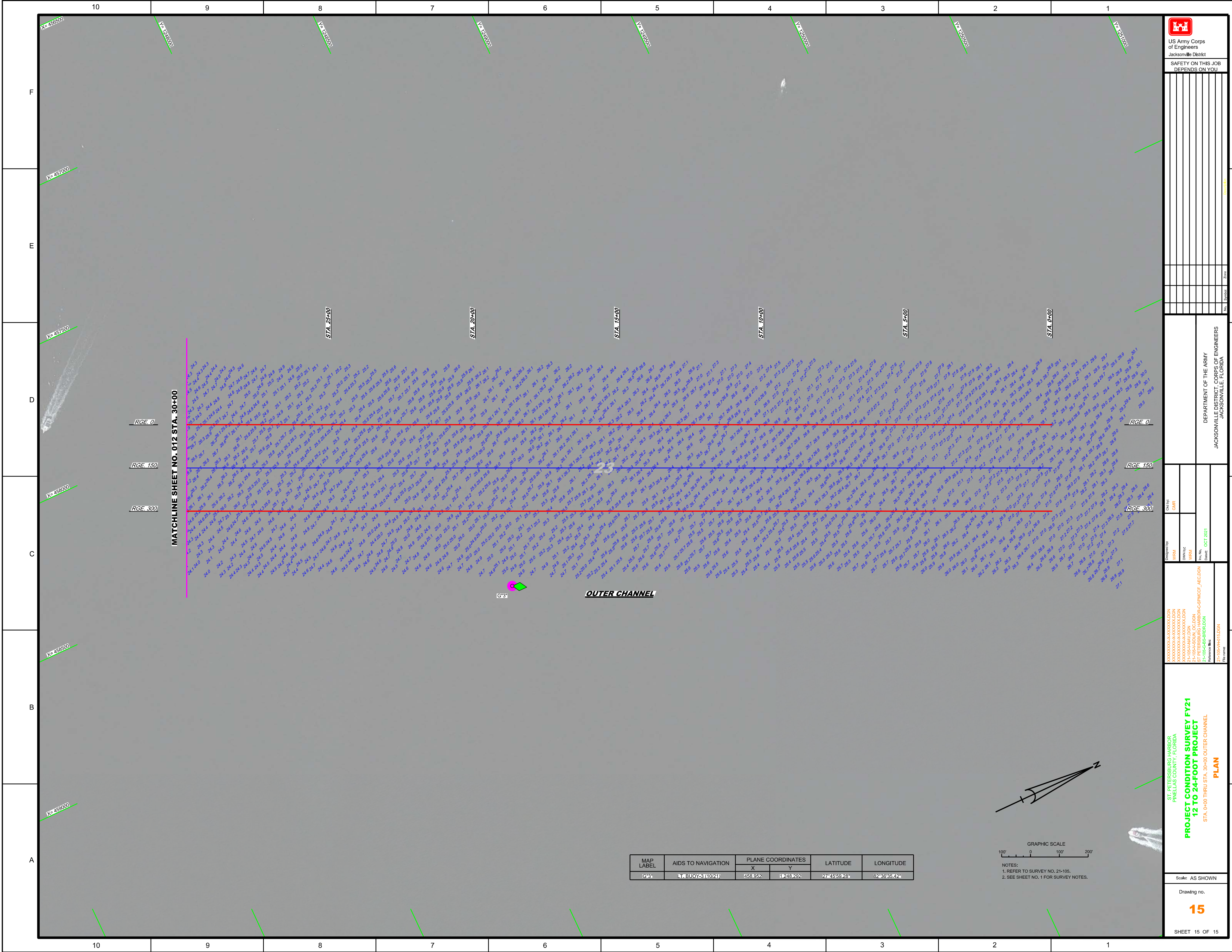
SHEET 14 OF 15

PLAN

MAP LABEL	AIDS TO NAVIGATION	PLANE COORDINATES		LATITUDE	LONGITUDE
		X	Y		
G"13"	DBN-13 (10/21)	452,830	1,245,489	27°45'31.22"	82°37'43.41"
LT "A"	LT-A (10/21)	452,176	1,245,906	27°45'35.32"	82°37'50.72"
SIGN	SIGN (10/21)	452,906	1,245,437	27°45'30.71"	82°37'42.56"

GRAPHIC SCALE
100' 0 100' 200'

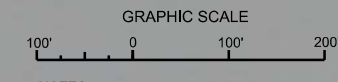
NOTES:
1. REFER TO SURVEY NO. 21-105.
2. SEE SHEET NO. 1 FOR SURVEY NOTES.



MATCHLINE SHEET NO. 012 STA. 30+00

OUTER CHANNEL

MAP LABEL	AIDS TO NAVIGATION	PLANE COORDINATES		LATITUDE	LONGITUDE
		X	Y		
G*3	L BUOY-3 (10/21)	458,952	1,248,292	27°45'59.28"	82°36'35.42"



NOTES:
 1. REFER TO SURVEY NO. 21-105.
 2. SEE SHEET NO. 1 FOR SURVEY NOTES.

Designed by WRM	Checked by GHR
DRAWN BY WRM	DATE OCT 2021
PROJECT ST PETERSBURG HARBOR-CR-SPACCF_AEC/DON ST PETERSBURG HARBOR-CR-SPACCF_AEC/DON ST PETERSBURG HARBOR-CR-SPACCF_AEC/DON ST PETERSBURG HARBOR-CR-SPACCF_AEC/DON	FILE NAME 21-105-AV01-L020

ST. PETERSBURG HARBOR
 PINELAS COUNTY, FLORIDA
**PROJECT CONDITION SURVEY FY21
 12 TO 24-FOOT PROJECT**
 STA. 0+00 THRU STA. 30+00 OUTER CHANNEL
PLAN